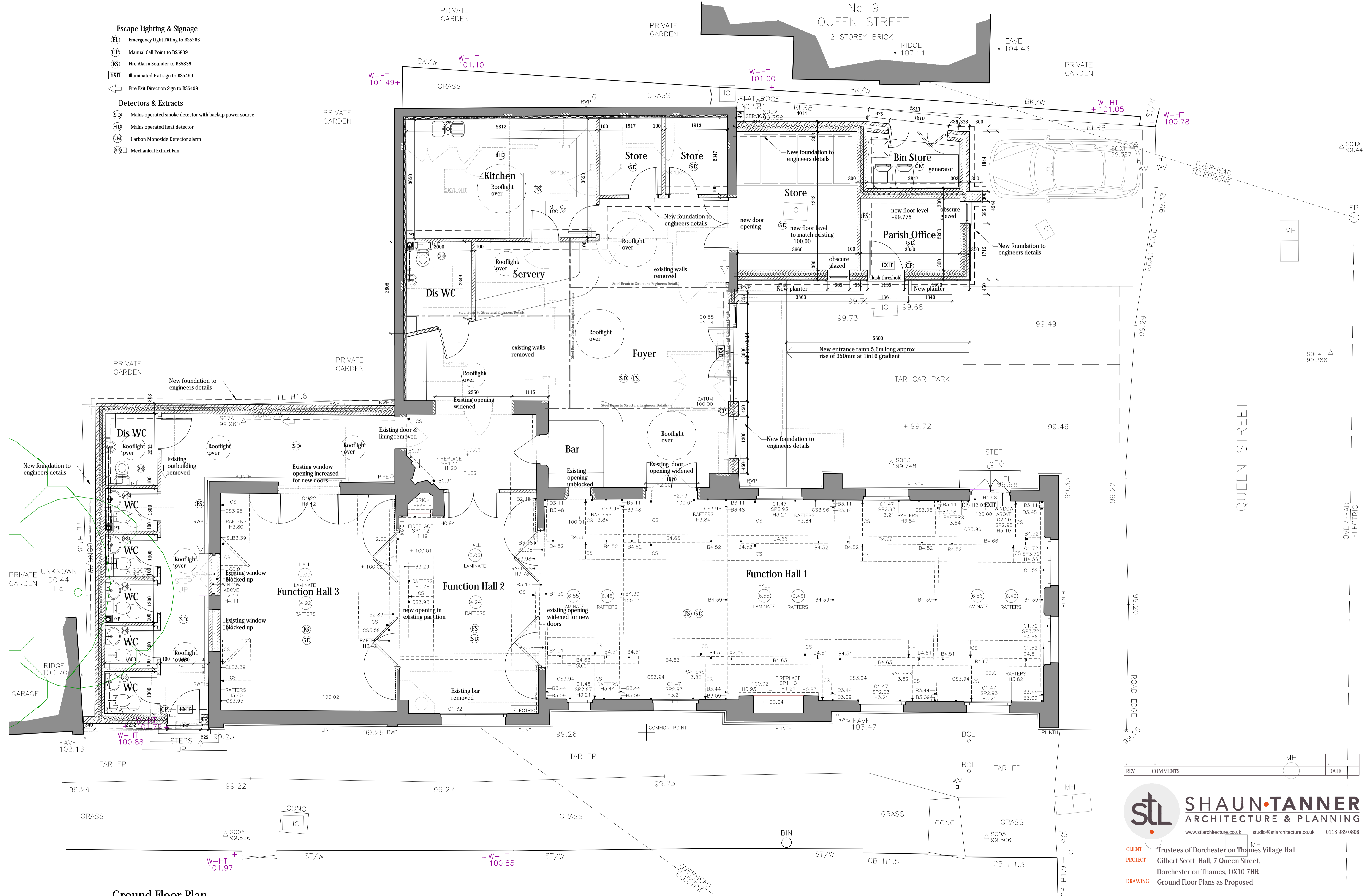


Escape Lighting & Signage

- Emergency Light Fitting to BS5286
- Manual Call Point to BS5839
- Fire Alarm Sounder to BS5839
- Illuminated Exit sign to BS499
- Fire Exit Direction Sign to BS5499

Detectors & Extracts

- Mains operated smoke detector with backup power source
- Mains operated heat detector
- Carbon Monoxide Detector alarm
- Mechanical Extract Fan



Ground Floor Plan

REV	COMMENTS	DATE

STL SHAUN TANNER ARCHITECTURE & PLANNING
 www.stlarchitecture.co.uk studio@stlarchitecture.co.uk 0118 989 0808

CLIENT Trustees of Dorchester Thames Village Hall
PROJECT Gilbert Scott Hall, 7 Queen Street, Dorchester on Thames, OX10 7HR
DRAWING Ground Floor Plans as Proposed

STATUS Building Regulations **DATE** July 2021

SCALE 1:50 @ A1 **DRAWN** DF **CHECKED** NO 3784/401 **REV** -

THIS DRAWING MUST NOT BE SCALED UNLESS ISSUED FOR PLANNING PURPOSES. ALL DIMENSIONS ARE TO BE VERIFIED PRIOR TO SETTING OUT. COMMENCING WORK, OR PRODUCTION OF FABRICATION DRAWINGS, REPORT ANY DISCREPANCIES TO THE SUPERVISING OFFICER IMMEDIATELY. ©